



ASTONS



Milton Mount  
Crawley, RH10 3DY

£192,500

## Milton Mount, Crawley, RH10 3DY

Nestled in the charming area of Milton Mount, Crawley, this delightful flat offers a perfect blend of comfort and convenience. The property features two double bedrooms, making it an ideal choice for couples, small families, or those seeking a peaceful retreat.

Upon entering, you are welcomed into a spacious reception room that provides a warm and inviting atmosphere, perfect for relaxation or entertaining guests. The large windows offer a superb, central view of the fountain and Victorian gardens. The layout is thoughtfully designed to maximise space and light, creating a homely environment that you will love coming back to.

### Hallway

Storage cupboards, electric heating, doors to;

### Lounge/Diner

Large double glazed windows over looking communal gardens, electric heating, door to;

### Kitchen

Fitted with a range of floor and eye level units, inset sink with drainer and mixer tap, space and power for electric cooker, space and plumbing for washing machine, double glazed window to rear aspect, airing cupboard, storage cupboard, part tiled walls.

### Bathroom

White suit comprising of hand basin, panel enclosed bath with shower attachment, part tiled walls, vinyl flooring, extractor fan.

### Seperate W/C

With w/c, vinyl flooring, extractor fan.

### Bedroom One

Double glazed window to rear aspect.

### Bedroom Two

Double glazed window to rear aspect, electric heating.

### Anti Money Laundering

In accordance with the requirements of the Anti Money Laundering Act 2022, Astons Sales and Lettings Ltd. mandates that prospective purchaser(s) who have an offer accepted on one of our

properties undergo identification verification. To facilitate this, we utilise MoveButler, an online platform for identity verification. The cost for each identification check is £20, including VAT charged by MoveButler at the point of onboarding, per individual (or company) listed as a purchaser in the memorandum of sale. This fee is non-refundable, regardless of the circumstances.

### Disclaimer

Please note in accordance with the Property Misdescriptions Act, measurements are approximate and cannot be guaranteed. No testing of services or appliances included has taken place. No checking of tenure or boundaries has been made. We are unaware whether alterations to the property have necessary regulations or approvals.

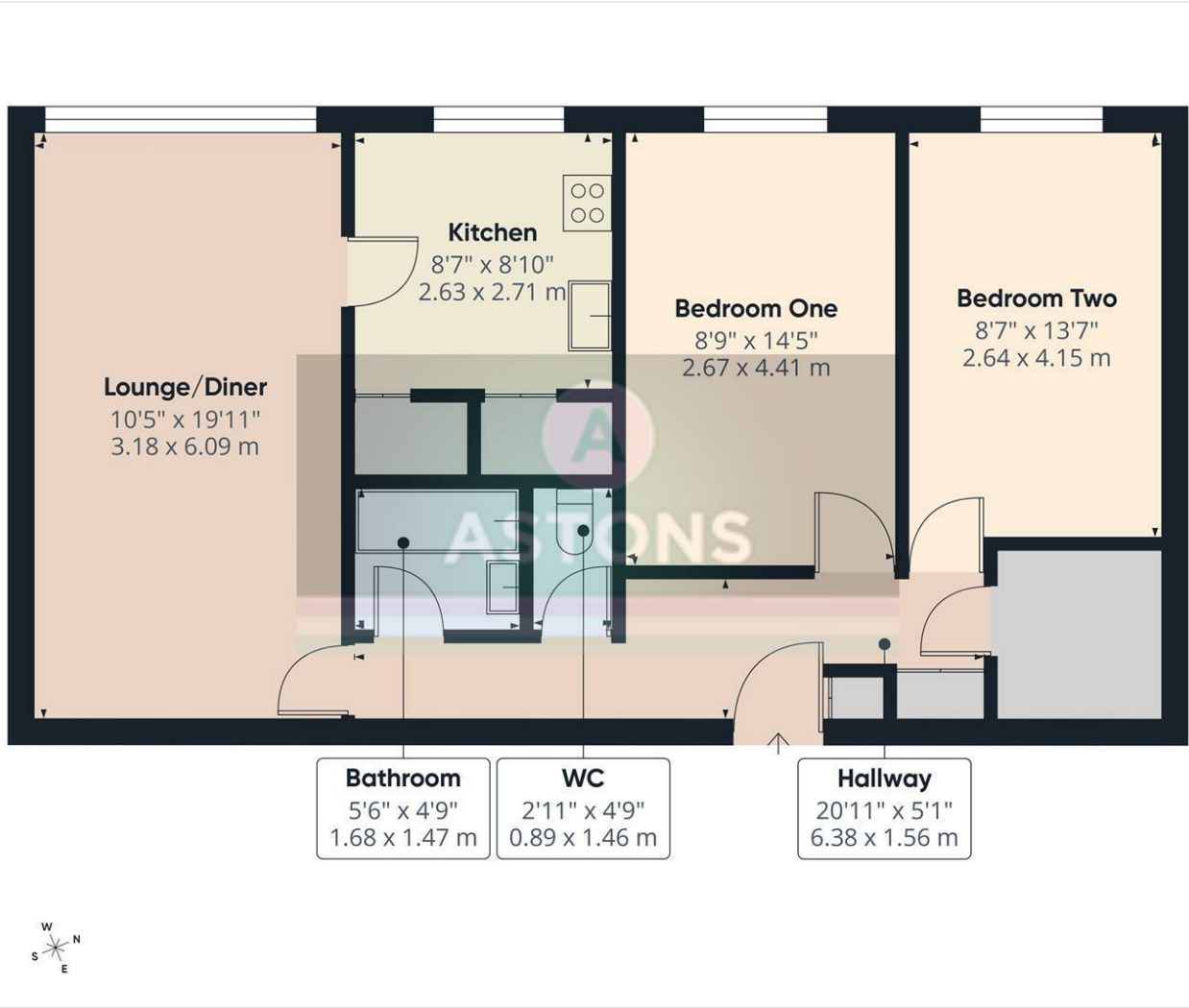
Referral Fees - We offer our customers a range of additional services, none of which are obligatory, and you are free to use service providers of your choice.

Should you choose a provider recommended by Astons, we will receive the following fees with the addition of VAT at the prevailing rate

Conveyancing - Lewis & Dick £200 per transaction

Mortgages - Finance Planning Group procurement fees from mortgage lenders which vary by lender. Customers will receive confirmation of these fees upon instruction and again as soon as the exact amounts are known.



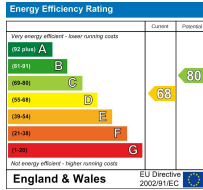
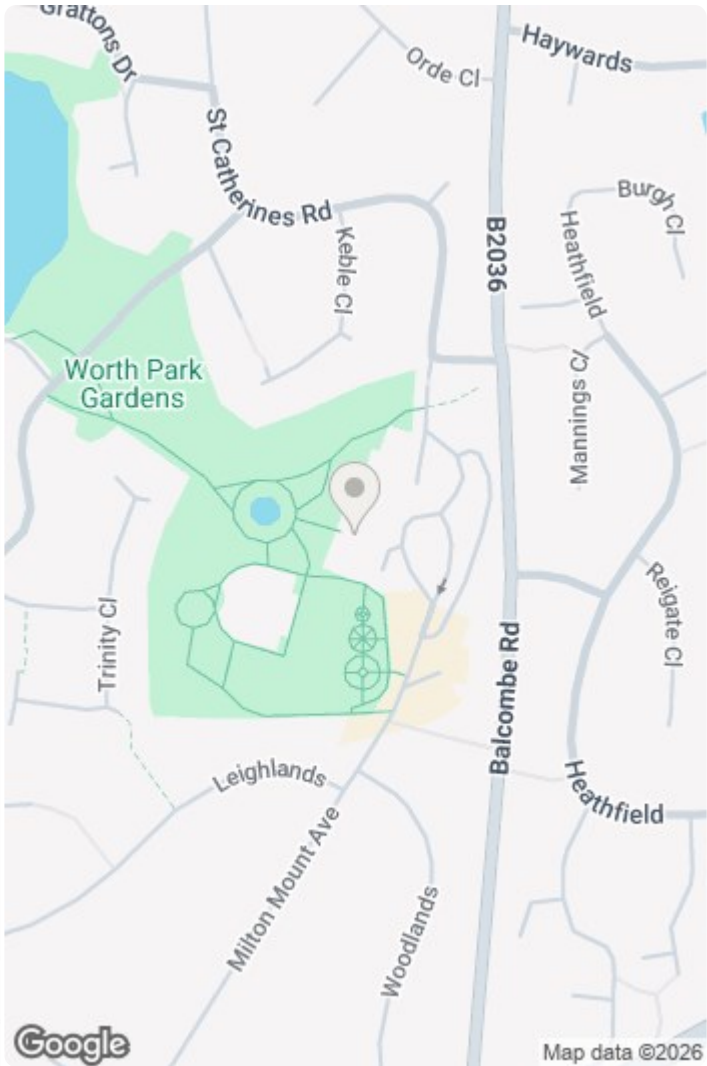


Approximate total area<sup>(1)</sup>  
715 ft<sup>2</sup>  
66.3 m<sup>2</sup>

(1) Excluding balconies and terraces

Calculations reference the RICS IPMS 3C standard. Measurements are approximate and not to scale. This floor plan is intended for illustration only.

GIRAFFE360



RESIDENTIAL SALES | NEW HOMES | PROPERTY INVESTMENT | LETTINGS | MORTGAGES



Astons Sales and Lettings Ltd, 32 High Street, Crawley. RH10 1BW  
01293 611999 | [www.astons.org](http://www.astons.org) | [sales@astons.org](mailto:sales@astons.org) | [lettings@astons.org](mailto:lettings@astons.org)

Registered address: Bassett House, 5 Southwell Park Road, Camberley, GU15 3PU. Reg No: 05149486 (England and Wales)



